



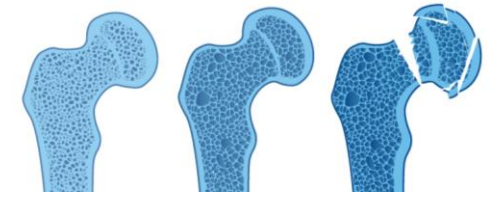
BROKEN BONES, BROKEN LIVES:

The fragility fracture crisis in Europe



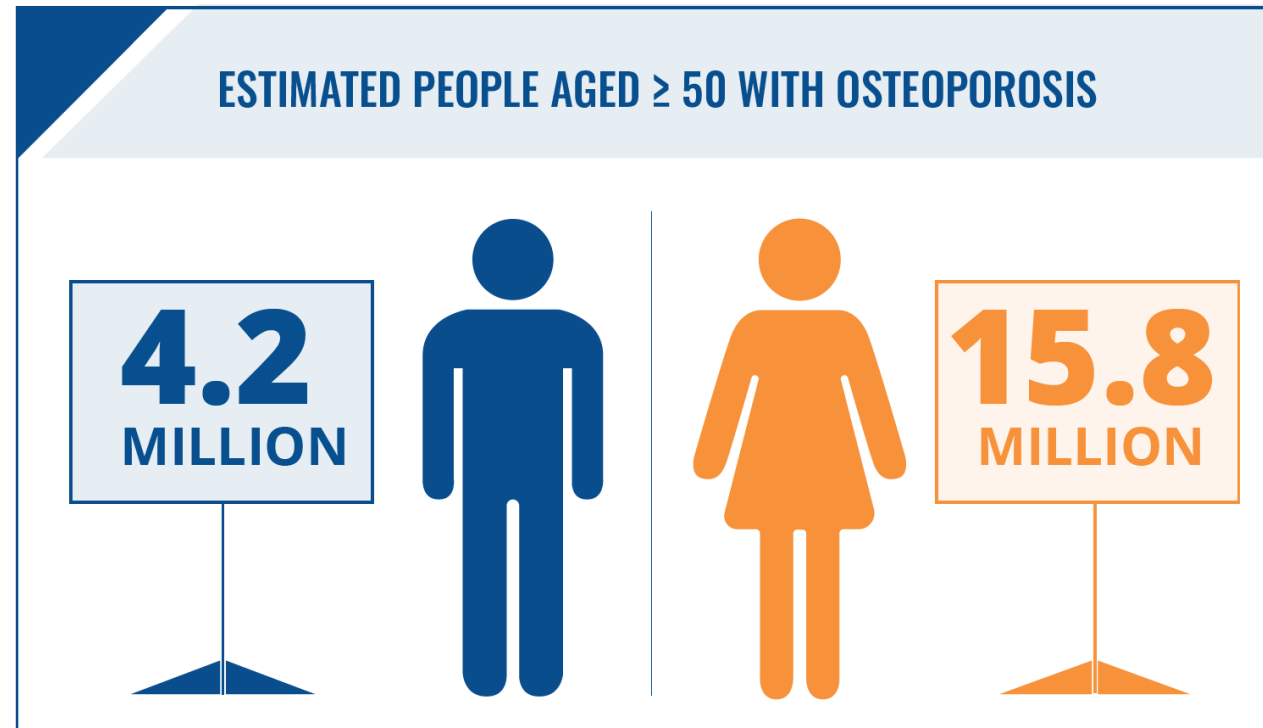
The development of this initiative has been supported by UCB.

OSTEOPOROSIS



Prevalence:

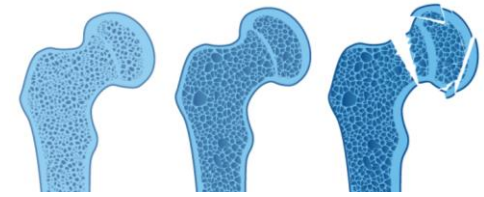
Approximately 20 million people have osteoporosis in the EU6* (2015)



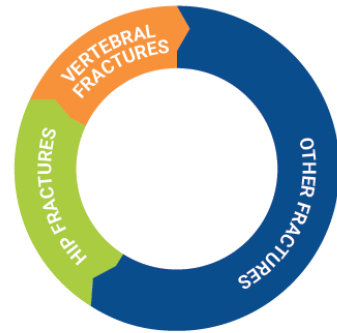
OSTEOPOROSIS



FRAGILE BONES THAT **FRACTURE EASILY**



TOTAL NUMBER OF FRAGILITY FRACTURES PER YEAR



2.676.200

of which 51% were MOFs*



* Major Osteoporotic Fractures

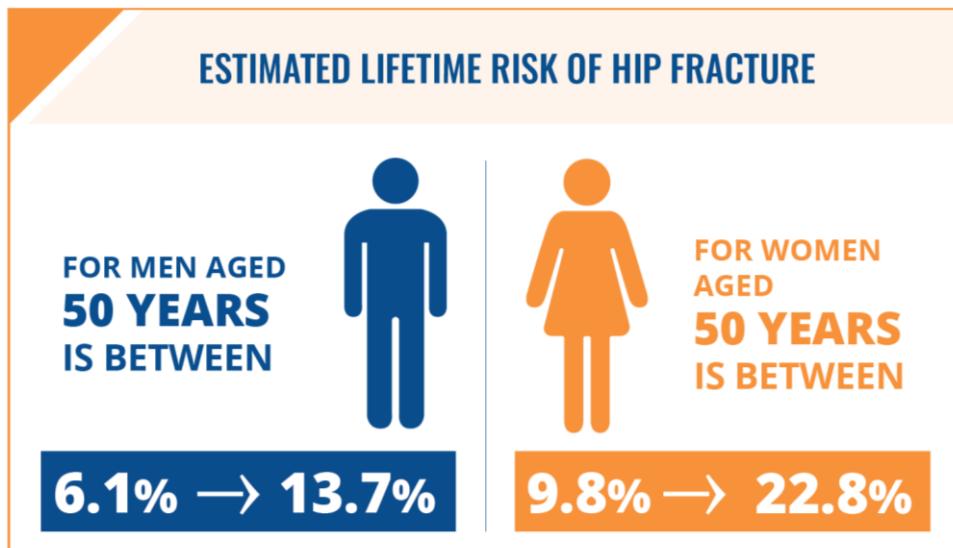
Fragility fractures due to osteoporosis affect both men and women

Incidence across EU6 in 2017:
Approximately 3% of women over the age of 50 suffer a new fragility fracture every year



FRAGILITY FRACTURES IN THE CONTEXT OF PUBLIC HEALTH PRIORITIES

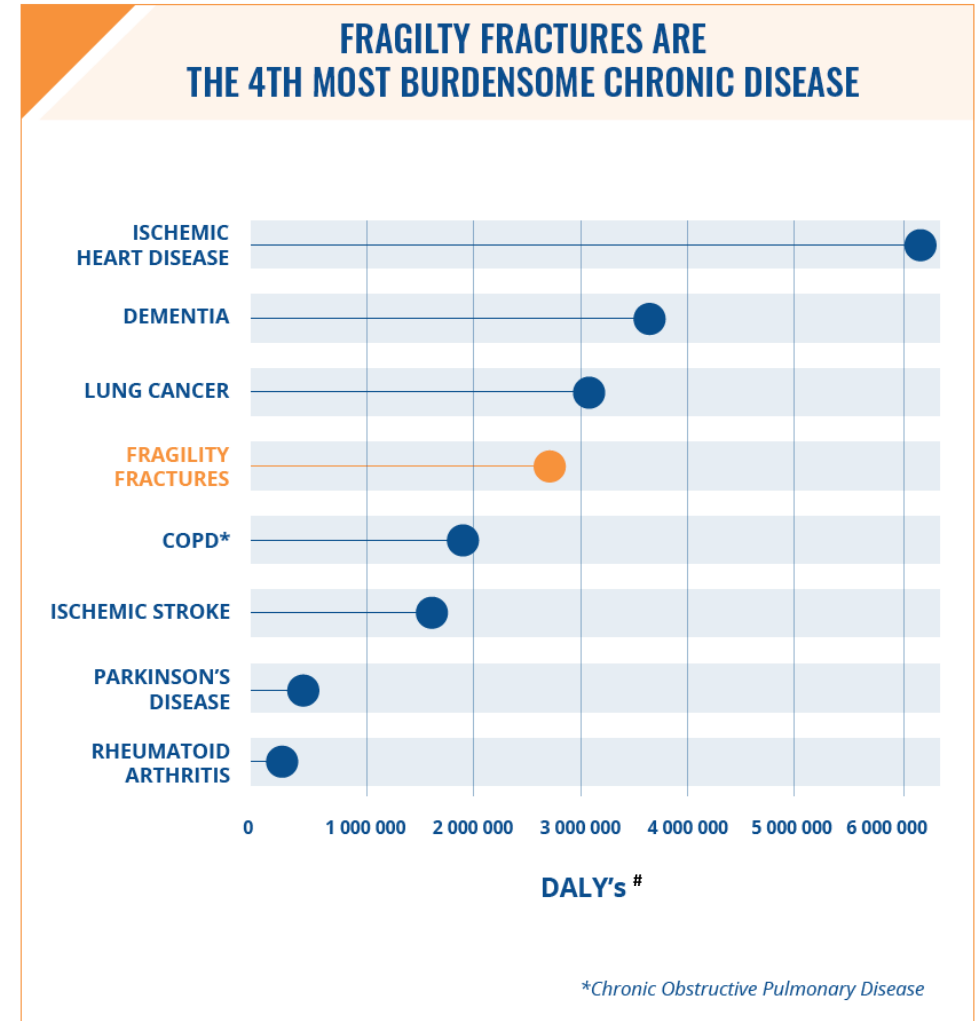
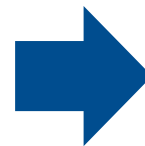
Lifetime risk of sustaining a hip fracture is similar to the lifetime risk of a having a stroke⁺ in Europe for both women and men



STROKE = 14%⁺

STROKE = 20%⁺

⁺ Stroke risk for individuals aged 50 in Europe



Disability-adjusted life years: a measure of the impact of a disease or injury in terms of healthy years lost



FRAGILITY FRACTURES INCUR SUBSTANTIAL HEALTHCARE COSTS

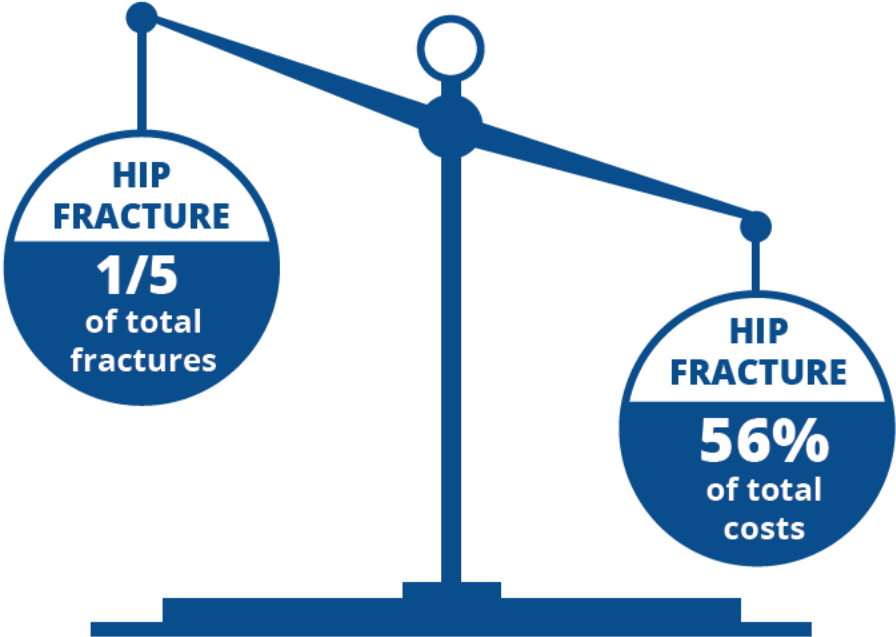
Fracture-related costs:

1st
YEAR

Happen **during first year** after fracture

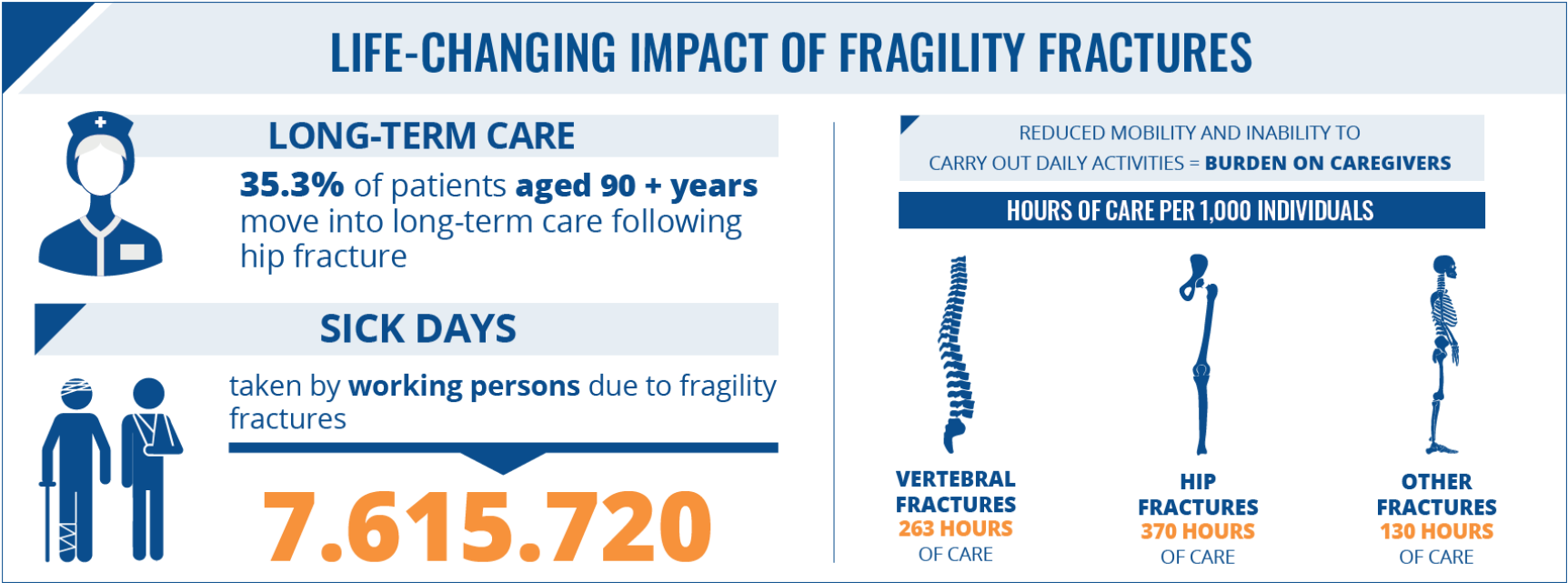


Highest with **hip fractures**



FRAGILITY FRACTURES HAVE A MULTIFACETED IMPACT ON THE INDIVIDUAL AND SOCIETY

Reduced independence and lifestyle impairment



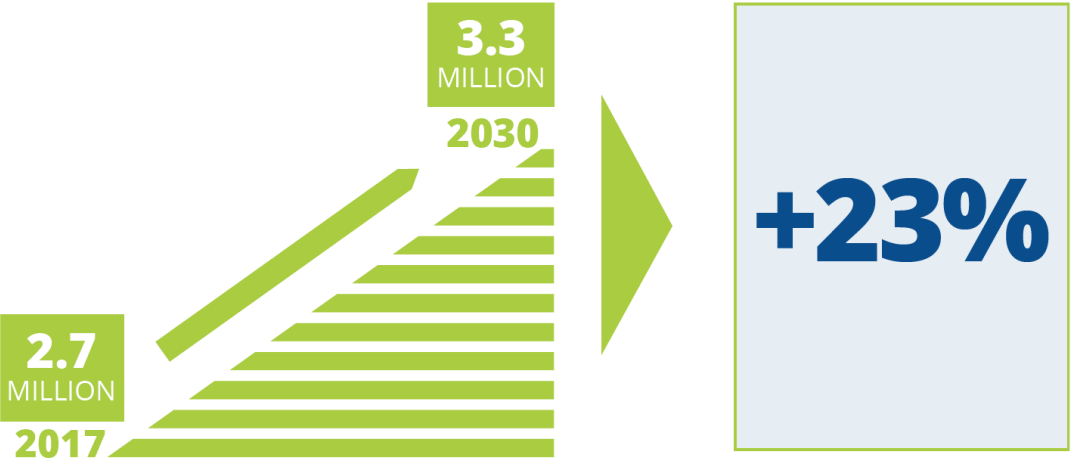
Patients suffering fragility fractures depend on care from family and friends

Fragility fractures can significantly impact the working population

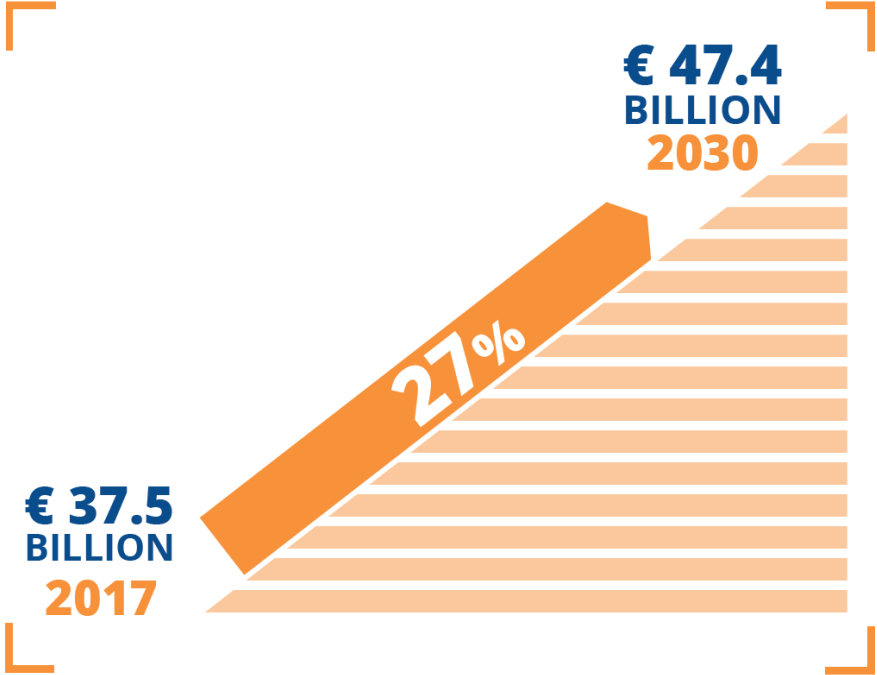


FRAGILITY FRACTURES ARE A GROWING CHALLENGE IN THE PUBLIC HEALTH LANDSCAPE

The incidence of fragility fractures is set to rise



Fracture-related costs are set to rise



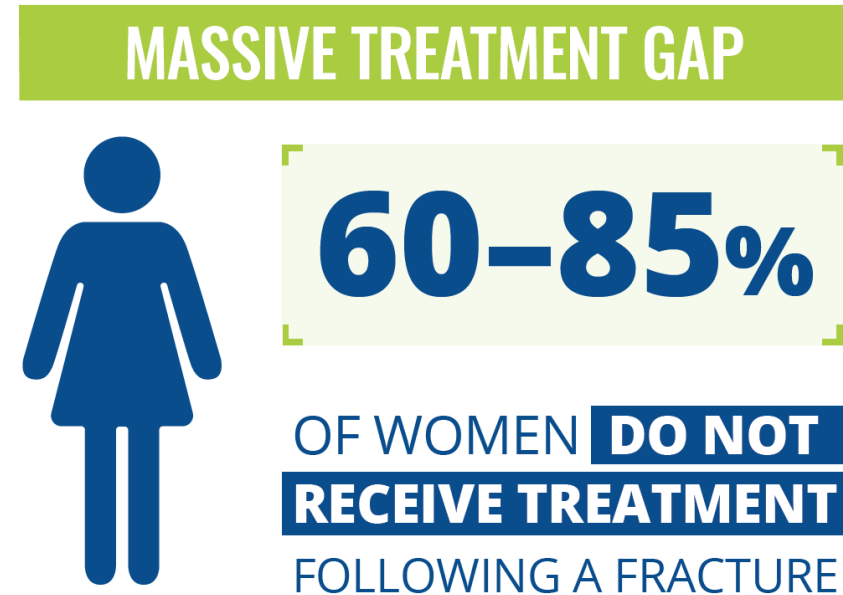
EFFECTIVE MANAGEMENT IMPROVES OUTCOMES AND REDUCES COSTS

One fragility fracture leads to another:

Women who had a fragility fracture are
**five times more likely to experience
a second fracture**

within the first year after a fracture
than women who have not had
a prior fracture,

yet...



With appropriate medical treatment,
many fragility fractures can be avoided



EFFECTIVE MANAGEMENT IMPROVES OUTCOMES AND REDUCES COSTS

Coordinated care models are multidisciplinary

healthcare delivery models which aim **to identify, diagnose and treat patients** who have suffered a fragility fracture

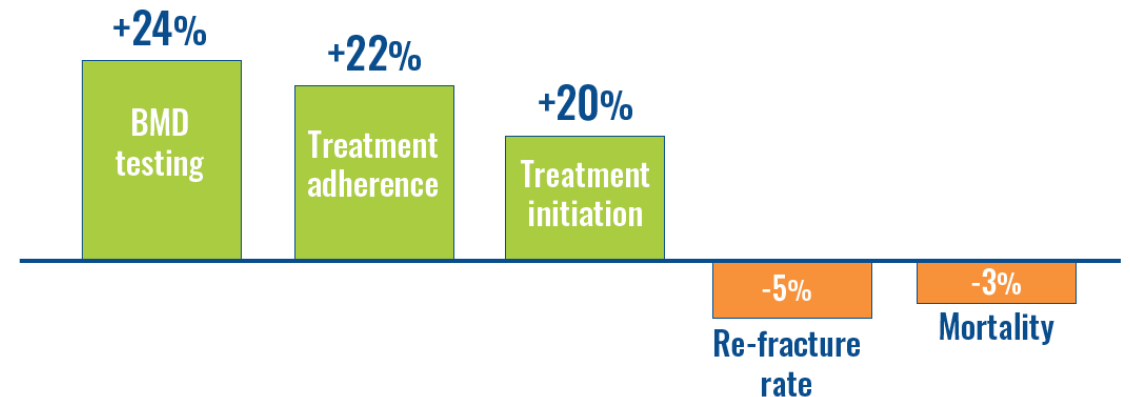
Multidisciplinary models

for secondary fracture prevention can **contribute to closing the treatment gap**

FRACTURE LIAISON SERVICES (FLS)

= cost-effective care delivery model to **IMPROVE OVERALL OUTCOMES & REDUCE COSTS**

EFFECTS of FLS (absolute change)





Broken bones, broken lives:
The fragility fracture
crisis in Europe

THIS PROJECT WAS SUPPORTED BY A COALITION OF 12 ORGANISATIONS

*The data analysis presented in this report was
conducted by Quantify, a health economics
analysis and consulting firm based in
Stockholm.*



FOR MORE INFORMATION

www.iofbonehealth.org/broken-bones-broken-lives