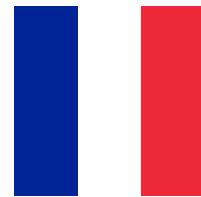




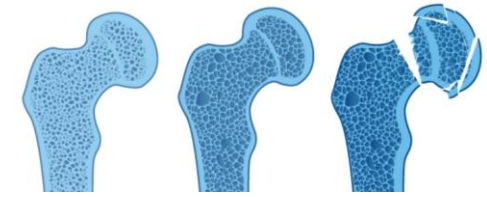
# BROKEN BONES, BROKEN LIVES:

The fragility fracture crisis in France

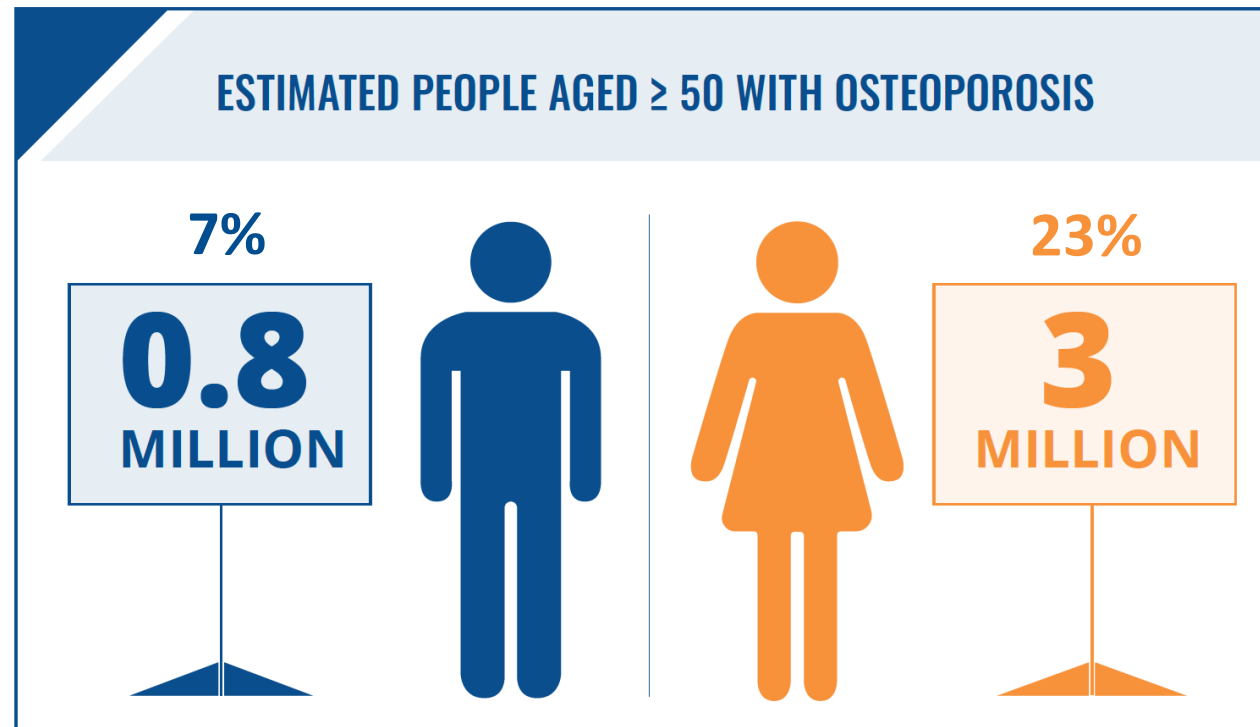


The development of this initiative has been supported by UCB.

# OSTEOPOROSIS



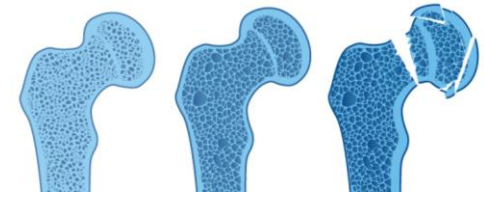
- Prevalence:**
- approximately 3.8 million people have osteoporosis in France (2015)
  - comparable to the other EU6\* nations



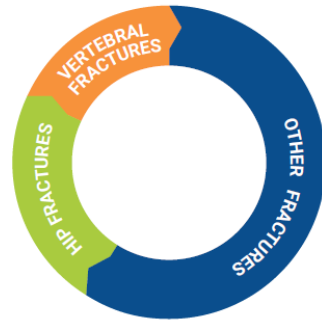
# OSTEOPOROSIS



# FRAGILE BONES THAT **FRACTURE EASILY**



## TOTAL NUMBER OF FRAGILITY FRACTURES PER YEAR



**381.566**

of which 51% were MOFs\*

	HIP FRACTURES	20%
	VERTEBRAL FRACTURES	15%
	OTHER FRACTURES	65%

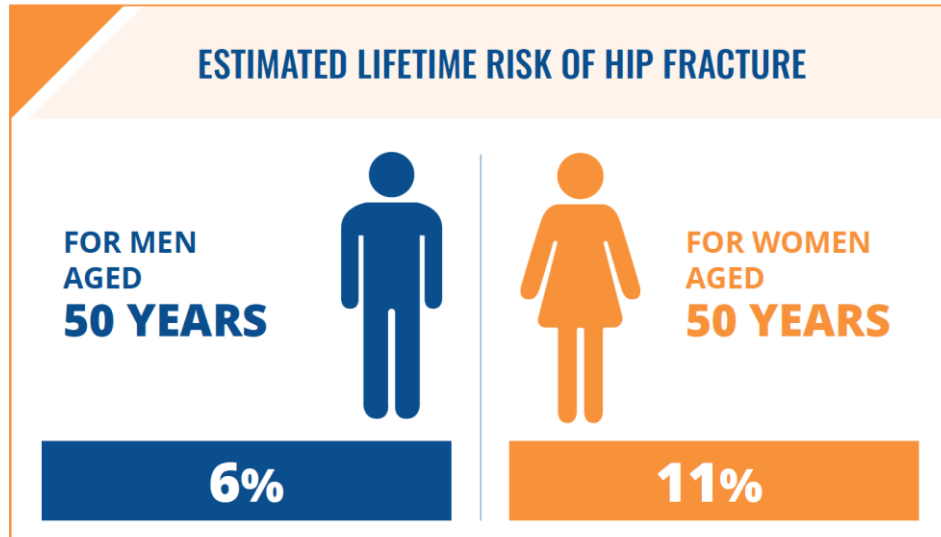
\* Major Osteoporotic Fractures

Fragility fractures due to osteoporosis affect both men and women

Incidence in France:  
Estimated number of fragility fractures in 2017, and by fracture category



# FRAGILITY FRACTURES IN THE CONTEXT OF PUBLIC HEALTH PRIORITIES

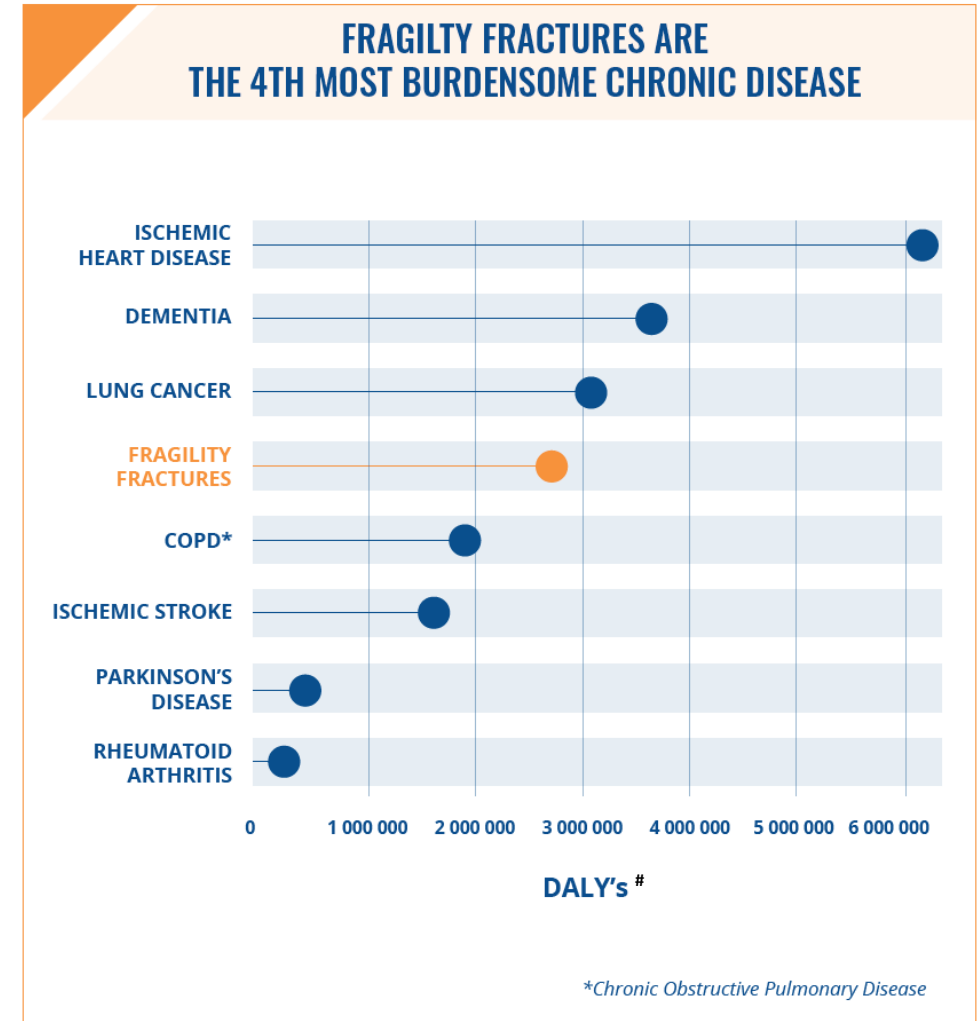
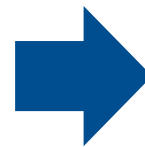


**MOF = 13%<sup>+</sup>**  
**STROKE = 14%<sup>+</sup>**

**MOF = 22%<sup>+</sup>**  
**STROKE = 20%<sup>+</sup>**

**Lifetime risk of sustaining a MOF is similar to the lifetime risk of a having a stroke for both women and men<sup>+</sup>**

<sup>+</sup> MOF (Major Osteoporotic Fracture) risk for individuals aged 50 in France; equivalent stroke risk in Europe



<sup>#</sup> Disability-adjusted life years: a measure of the impact of a disease or injury in terms of healthy years lost



# FRAGILITY FRACTURES INCUR SUBSTANTIAL HEALTHCARE COSTS

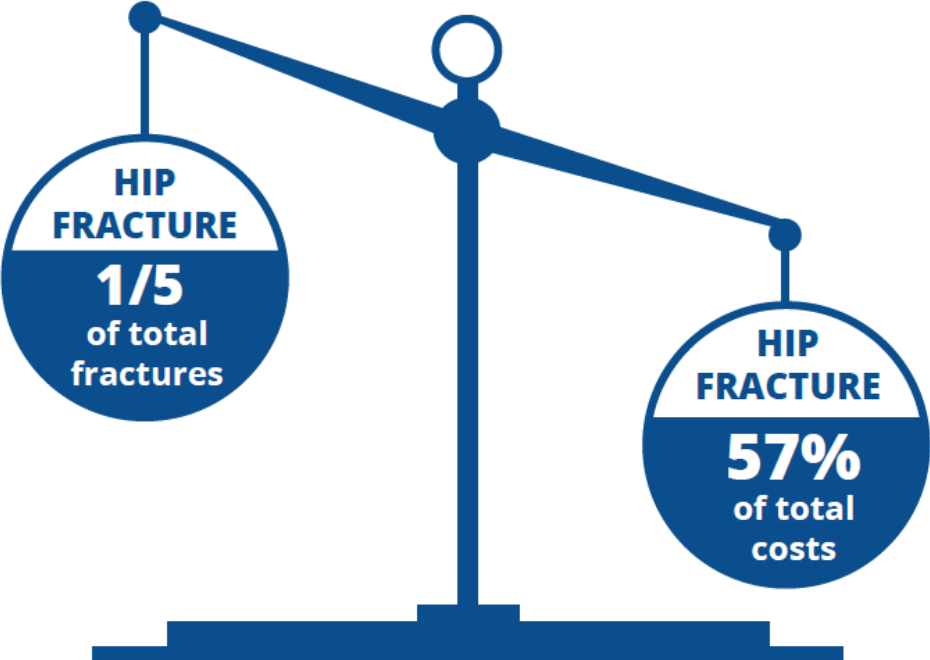
## Fracture-related costs:

**1st**  
YEAR

Happen **during first year** after fracture

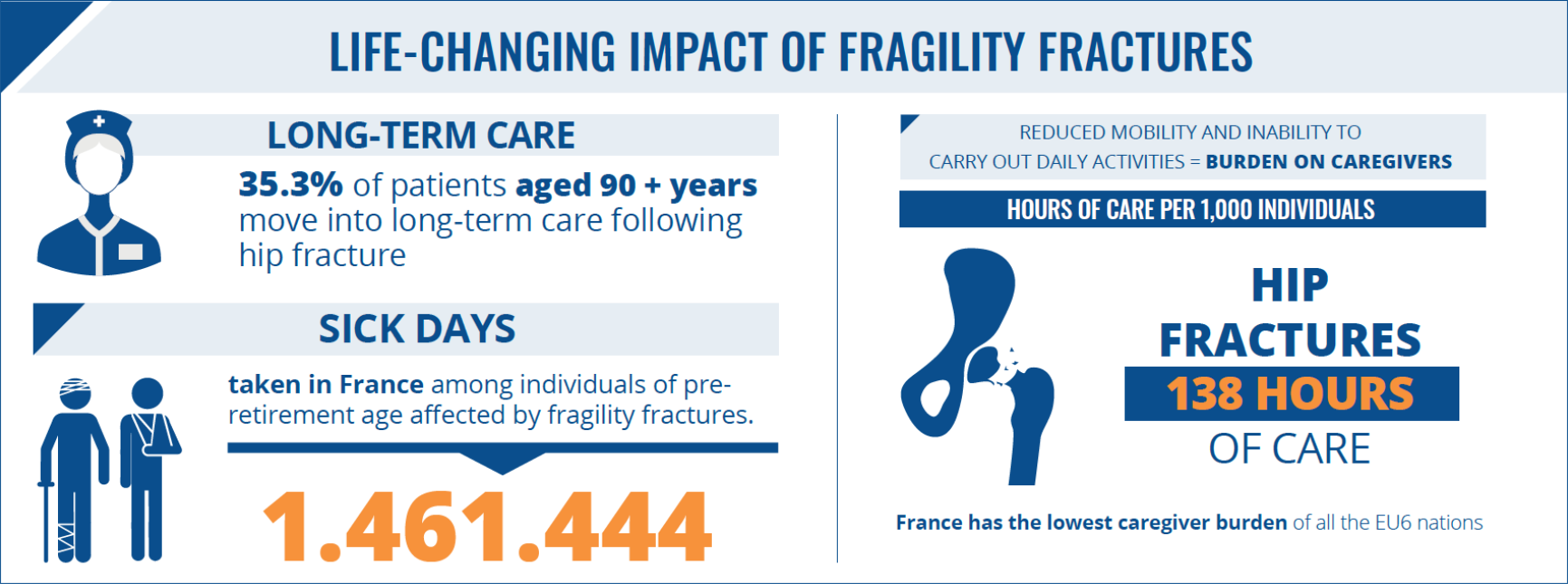


Highest with **hip fractures**



# FRAGILITY FRACTURES HAVE A MULTIFACETED IMPACT ON THE INDIVIDUAL AND SOCIETY

Reduced independence and lifestyle impairment:  
year following initial fracture, 12.5% re-hospitalisation



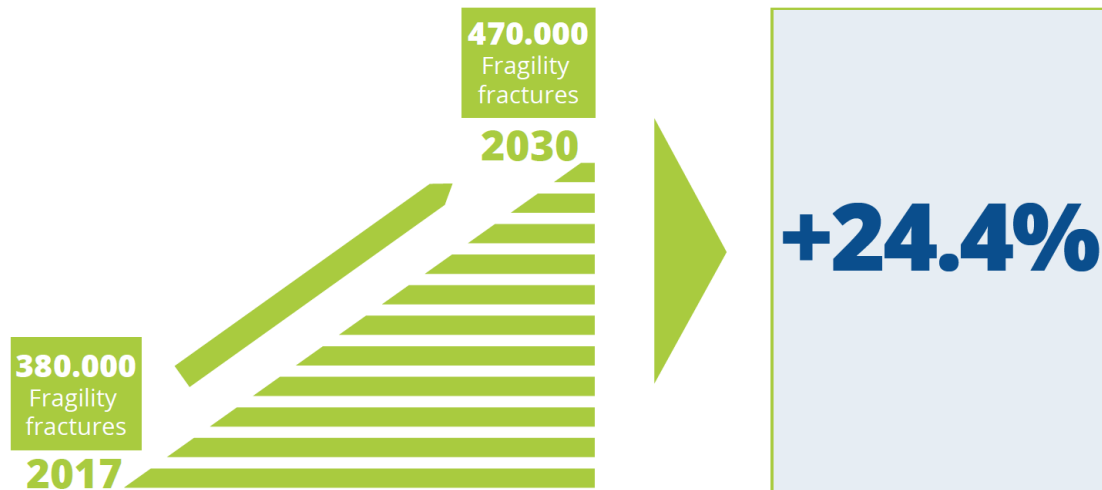
Patients suffering fragility fractures depend on care from family and friends

Fragility fractures can significantly impact the working population:  
estimated 20% of fractures occur at pre-retirement age

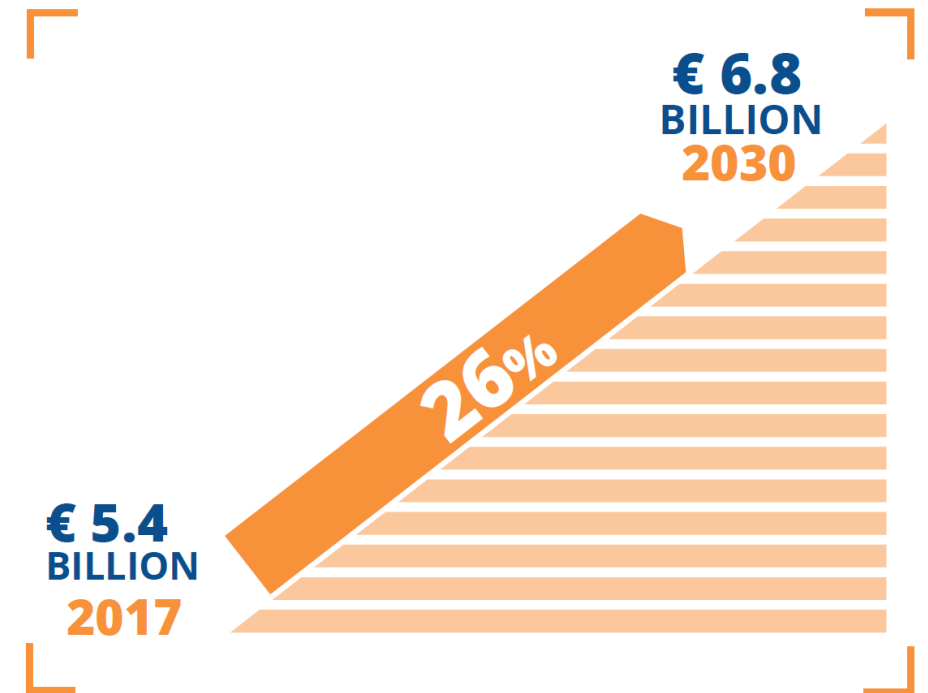


# FRAGILITY FRACTURES ARE A GROWING CHALLENGE IN THE PUBLIC HEALTH LANDSCAPE

The incidence of fragility fractures is set to rise



Fracture-related costs are set to rise



# EFFECTIVE MANAGEMENT IMPROVES OUTCOMES AND REDUCES COSTS

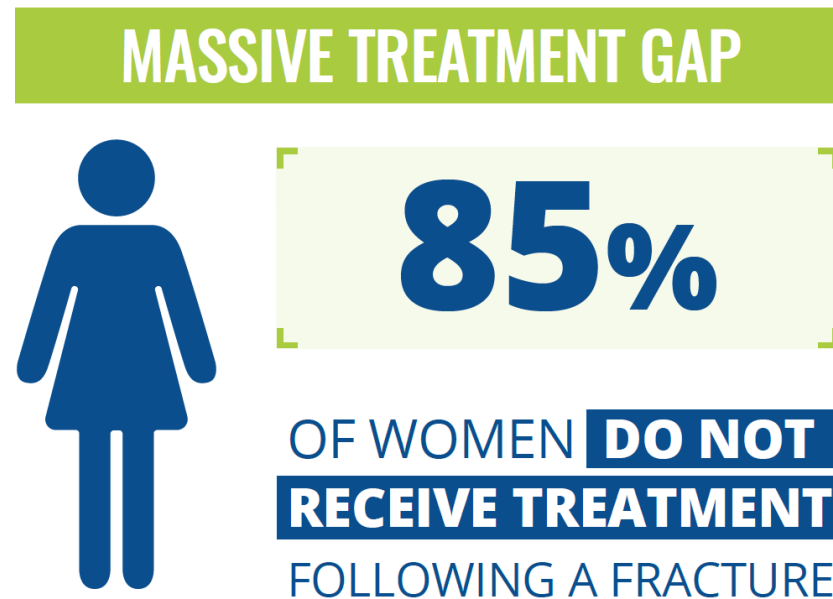
## One fragility fracture leads to another:

Women who have had a fragility fracture are

**five times more likely to experience a second fracture**

within the first year after a fracture than women who have not had a prior fracture,

yet...



With appropriate medical treatment, many fragility fractures can be avoided





# EFFECTIVE MANAGEMENT IMPROVES OUTCOMES AND REDUCES COSTS

**Coordinated care models are multidisciplinary**

healthcare delivery models which aim **to identify, diagnose and treat patients** who have suffered a fragility fracture

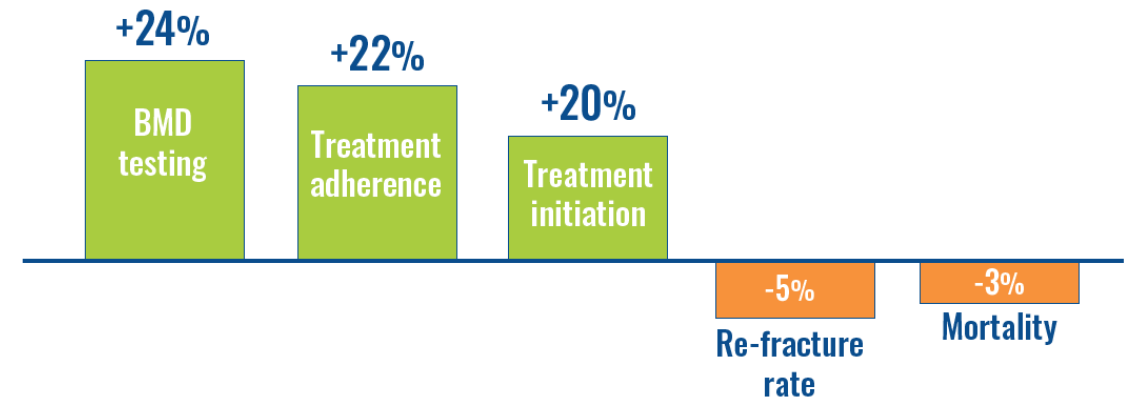
**Multidisciplinary models**

for secondary fracture prevention can **contribute to closing the treatment gap**

## FRACTURE LIAISON SERVICES (FLS)

= cost-effective care delivery model to **IMPROVE OVERALL OUTCOMES & REDUCE COSTS**

### EFFECTS of FLS (absolute change)



# A ROADMAP TO SOLVE THE FRAGILITY FRACTURE CRISIS IN FRANCE

As part of a **multidisciplinary consultation across France, the Estates General for osteoporosis, established seven key priorities** to enable better management of fragility fractures in 2017



**A year on, the Estates General's recommendations remain more relevant than ever** to improve the care of the many patients who have experienced at least one fragility fracture

1. Change the paradigm from osteoporosis to fracture: Awareness campaigns
2. Develop primary prevention strategies for fragility fractures
3. Develop secondary prevention strategies so that the first fracture is the last
4. Promote incentive measures for GPs in the management of osteoporosis
5. Promote and support a research plan to address the costs of the 'fracture cascade' and the benefits of innovative multidisciplinary care pathways
6. Promote fall prevention and support the independent living of patients at risk of fragility fracture
7. Create a fragility fracture registry, potentially starting with pilots in one or two regions





Broken bones, broken lives:  
The fragility fracture  
crisis in France



**FOR MORE INFORMATION**

**[www.iofbonehealth.org/broken-bones-broken-lives](http://www.iofbonehealth.org/broken-bones-broken-lives)**