



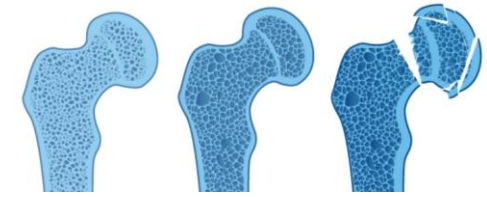
BROKEN BONES, BROKEN LIVES:

The fragility fracture crisis in Spain

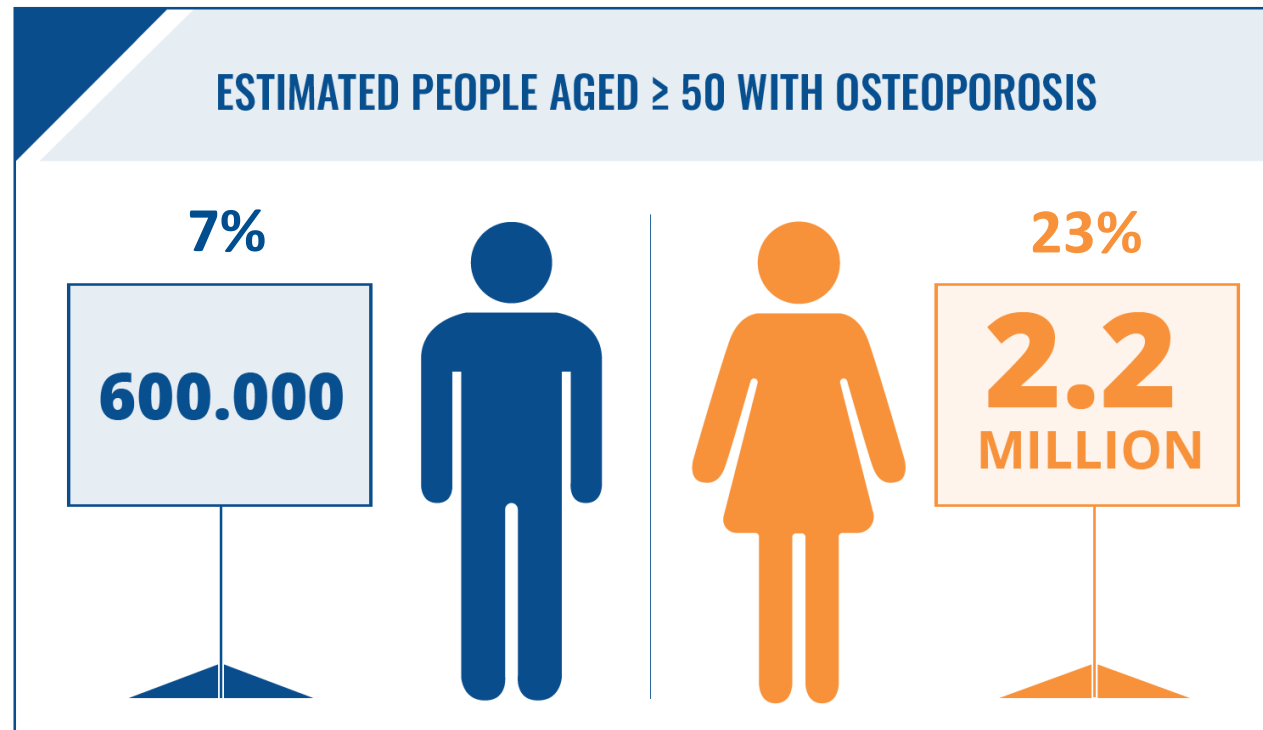


The development of this initiative has been supported by UCB.

OSTEOPOROSIS



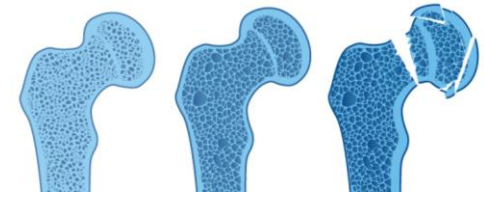
- Prevalence:**
- approximately 2.8 million people have osteoporosis in Spain (2015)
 - comparable to the other EU6* nations



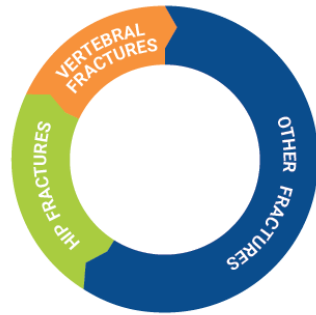
OSTEOPOROSIS



FRAGILE BONES THAT **FRACTURE EASILY**



TOTAL NUMBER OF FRAGILITY FRACTURES PER YEAR



330.000

of which 52% were MOFs*

	HIP FRACTURES	22%
	VERTEBRAL FRACTURES	15%
	OTHER FRACTURES	63%

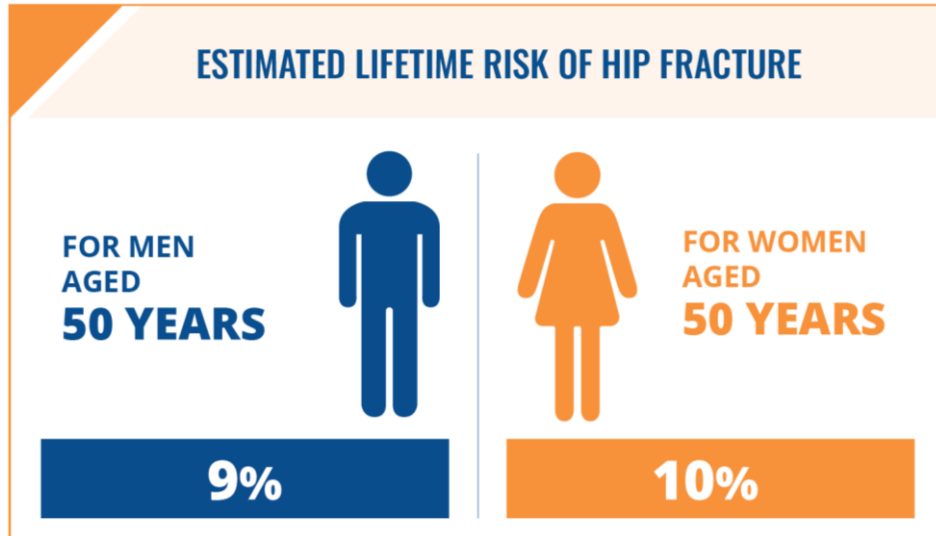
* Major Osteoporotic Fractures

Fragility fractures due to osteoporosis affect both men and women

Incidence in Spain:
Estimated number of fragility fractures in 2017, and by fracture category



FRAGILITY FRACTURES IN THE CONTEXT OF PUBLIC HEALTH PRIORITIES

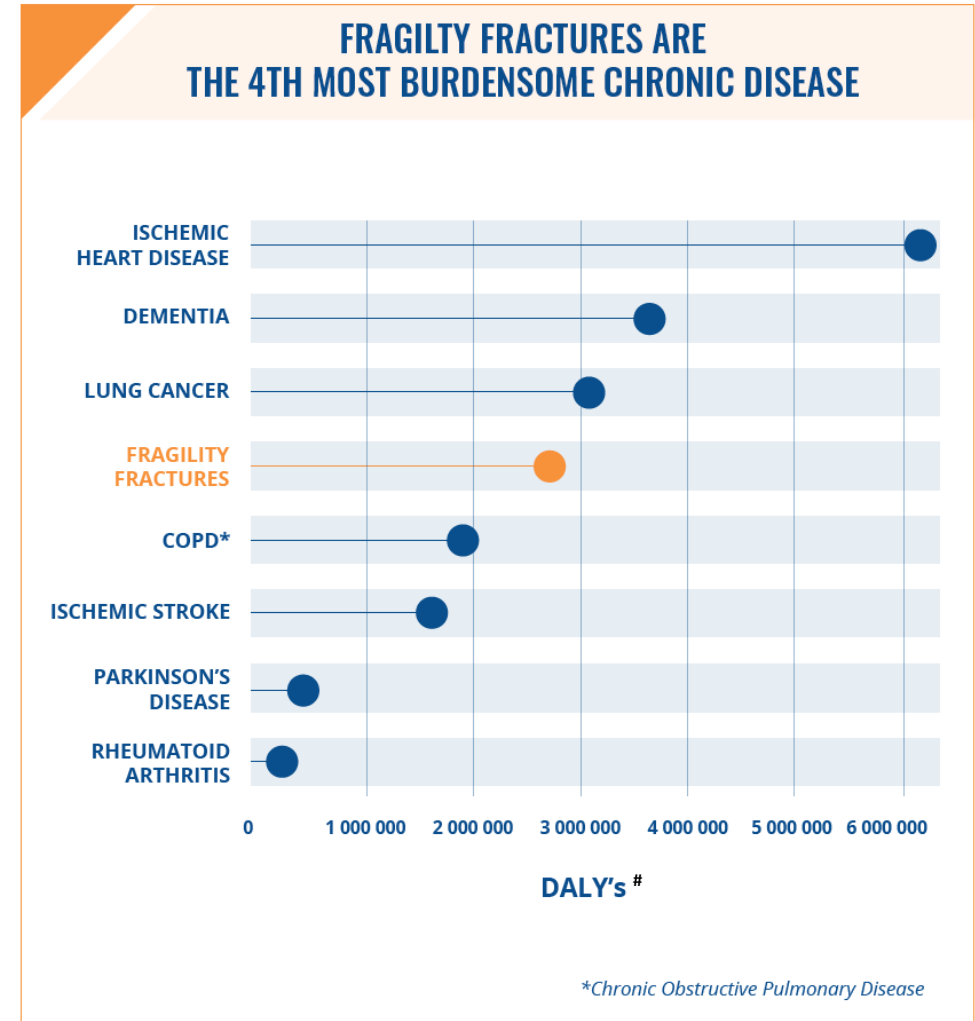
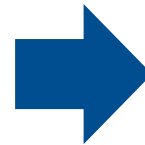


MOF = 18%⁺
STROKE = 14%⁺

MOF = 20%⁺
STROKE = 20%⁺

Lifetime risk of sustaining a MOF is similar to the lifetime risk of having a stroke for both women and men⁺

⁺ MOF (Major Osteoporotic Fracture) risk for individuals aged 50 in Spain; equivalent stroke risk in Europe



Disability-adjusted life years: a measure of the impact of a disease or injury in terms of healthy years lost



FRAGILITY FRACTURES INCUR SUBSTANTIAL HEALTHCARE COSTS

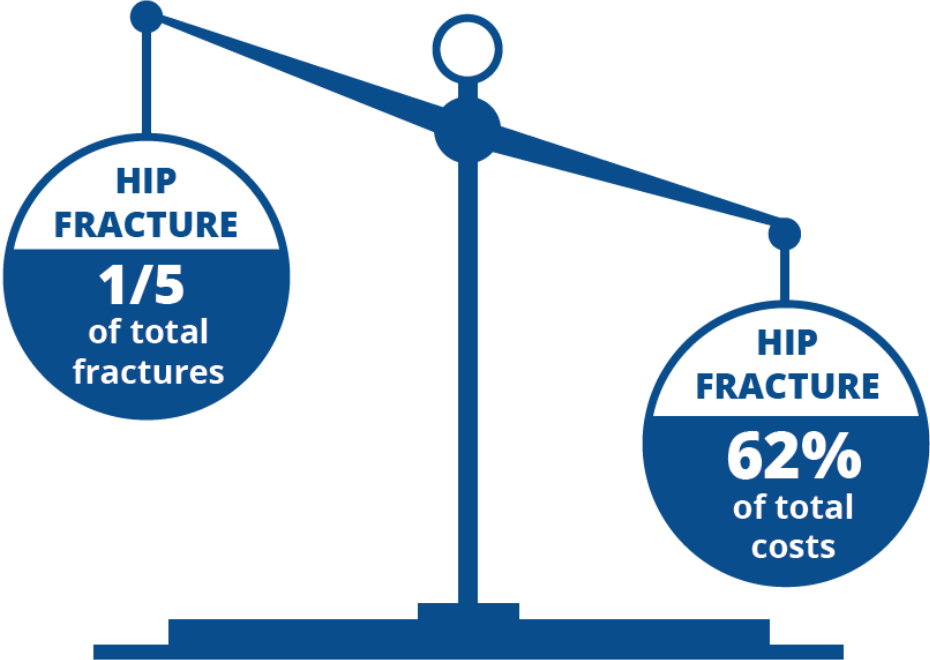
Fracture-related costs:

1st
YEAR

Happen **during first year** after fracture

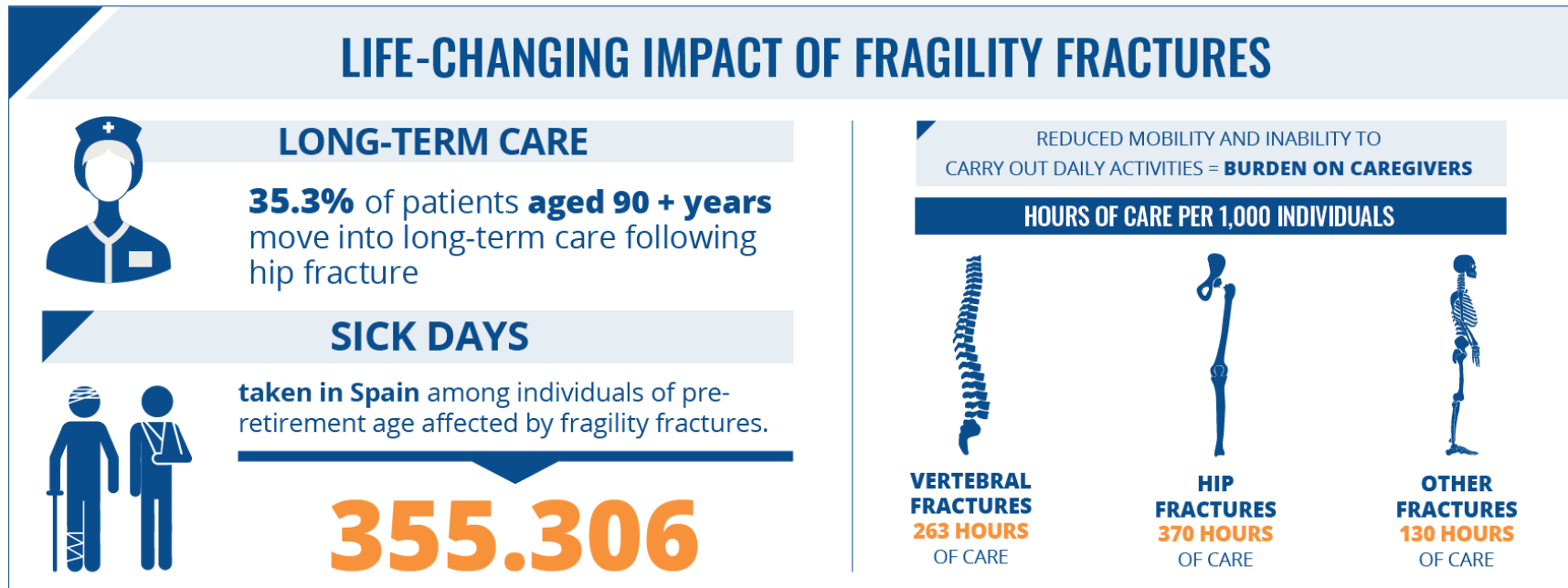


Highest with **hip fractures**



FRAGILITY FRACTURES HAVE A MULTIFACETED IMPACT ON THE INDIVIDUAL AND SOCIETY

Reduced independence and lifestyle impairment



Patients suffering fragility fractures depend on care from family and friends:

Spain has the second highest caregiver burden of all EU6 nations with 756 hours of care per 1000 individuals, per year

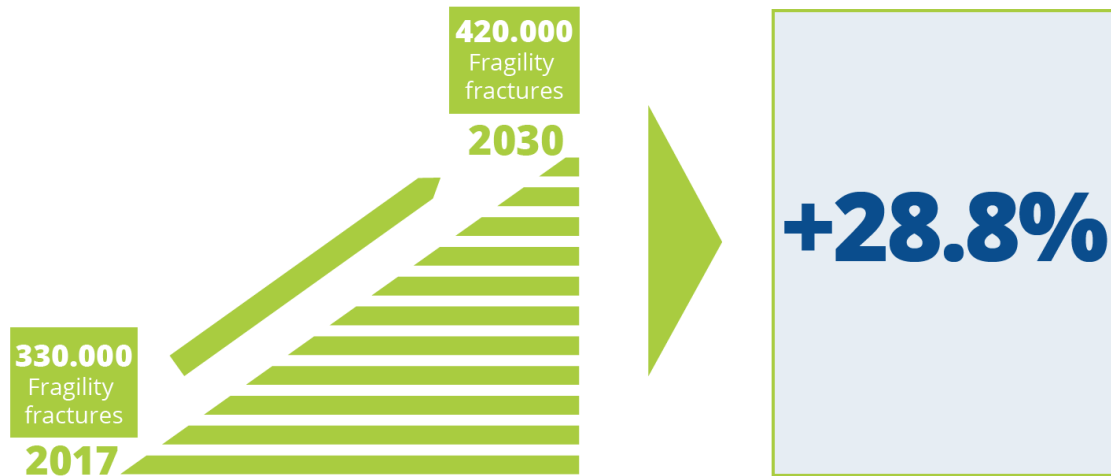
Fragility fractures can significantly impact the working population:

Spain has the lowest number of average sick days taken per 1000 people compared to the EU6

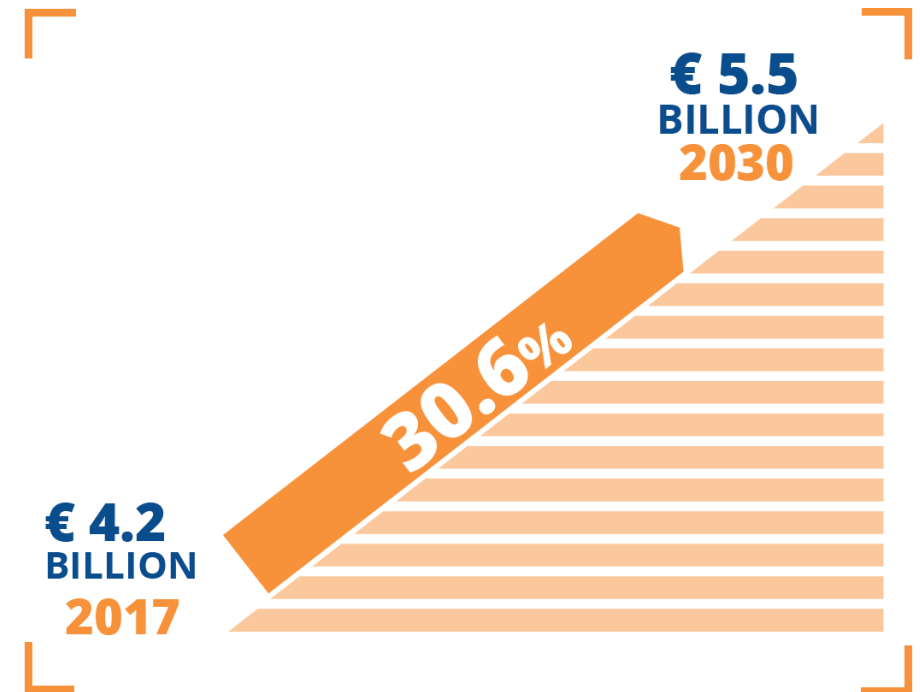


FRAGILITY FRACTURES ARE A GROWING CHALLENGE IN THE PUBLIC HEALTH LANDSCAPE

The incidence of fragility fractures is set to rise



Fracture-related costs are set to rise



EFFECTIVE MANAGEMENT IMPROVES OUTCOMES AND REDUCES COSTS

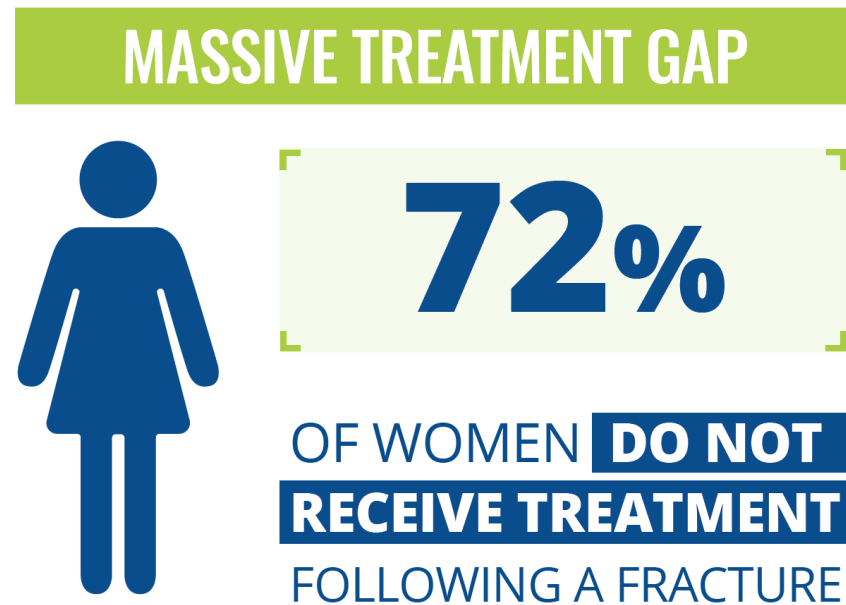
One fragility fracture leads to another:

Women who have had a fragility fracture are

five times more likely to experience a second fracture

within the first year after a fracture than women who have not had a prior fracture,

yet...



With appropriate medical treatment, many fragility fractures can be avoided



EFFECTIVE MANAGEMENT IMPROVES OUTCOMES AND REDUCES COSTS

Coordinated care models are multidisciplinary

healthcare delivery models which aim **to identify, diagnose and treat patients** who have suffered a fragility fracture

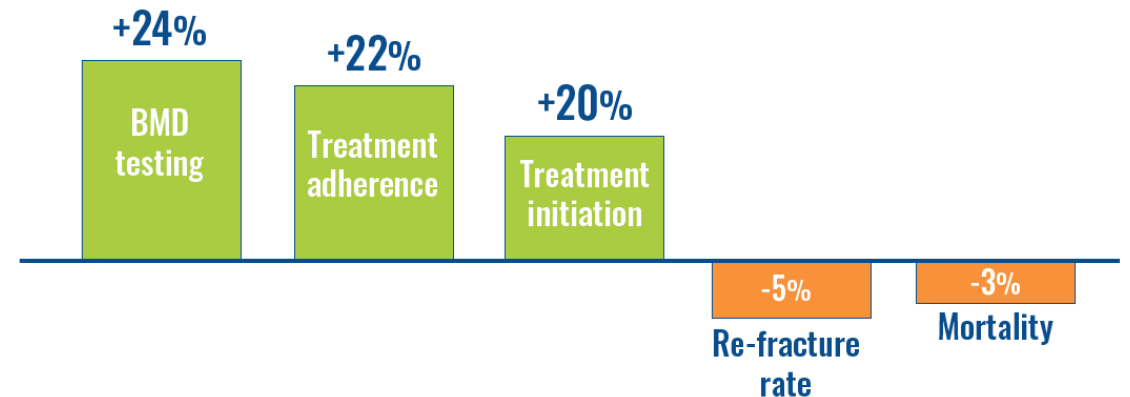
Multidisciplinary models

for secondary fracture prevention can **contribute to closing the treatment gap**

FRACTURE LIAISON SERVICES (FLS)

= cost-effective care delivery model to **IMPROVE OVERALL OUTCOMES & REDUCE COSTS**

EFFECTS of FLS (absolute change)



A ROADMAP TO SOLVE THE FRAGILITY FRACTURE CRISIS IN SPAIN

Spain fares slightly better than other countries

in terms of fragility fracture management. **However, a lot of work is still required** to achieve excellence in managing this growing public health problem



Policy has a strong role to play in recognizing that fragility fractures are a hidden public health threat that requires immediate action

1. Prioritize secondary fracture prevention
2. Create national consensus care protocols (Código de Fractura)
3. Support the development and implementation of post-fracture care models
4. Strengthen registries tracking fragility fractures and FLS' impact
5. Develop a guidance to reduce waiting time for hip fracture surgery
6. Improve and harmonize post-fracture care through quality standards and indicators
7. Patient awareness and engagement campaigns





Broken bones, broken lives:
The fragility fracture
crisis in Spain



FOR MORE INFORMATION

www.iofbonehealth.org/broken-bones-broken-lives