

A NEW SCORECARD FOR OSTEOPOROSIS IN EU 27+2

REVEALS BURDEN OF DISEASE, GAPS, AND INEQUALITIES IN OSTEOPOROSIS & FRACTURE PREVENTION AND CARE

BURDEN OF DISEASE

4,000

NEW FRAGILITY FRACTURES IN 2019



11

FRACTURES PER DAY



0.5

FRACTURES PER HOUR

CHANGE IN COST PER INDIVIDUAL

€47.5
2010

€66.8
2019

+41%

29,600

INDIVIDUALS WITH OSTEOPOROSIS IN 2019

78.0%

WOMEN

22.0%

MEN

4.3% OF THE TOTAL POPULATION

€40.7 MILLION

SPENT IN 2019



€10.8 MILLION

LONG-TERM DISABILITY COSTS



€28.3 MILLION

DIRECT COST OF INCIDENT FRACTURES



€1.6 MILLION

PHARMACOLOGICAL INTERVENTION

HUGE COST BURDEN FOR OSTEOPOROSIS-RELATED HEALTHCARE

PROJECTED INCREASE IN THE NUMBER OF FRAGILITY FRACTURES

5,800

4,000

2034

2019

+44.1%



SERVICE PROVISION & UPTAKE

N/A*

REIMBURSEMENT OF OSTEOPOROSIS MEDICATIONS

1.7

AVAILABLE DXA UNITS/MILLION INHABITANTS

507**

FRAX® SESSIONS/MILLION PEOPLE/YEAR

N/A*

DXA COST

NO

FRAX® RISK ASSESSMENT MODEL IS AVAILABLE

N/A*

OF HOSPITALS HAVING FRACTURE LIAISON SERVICES

**COUNTED FOR THE USE OF A SURROGATE FRAX® MODEL

*NO DATA AVAILABLE

5,000

WOMEN TREATED FOR OSTEOPOROSIS

19,000

WOMEN ELIGIBLE FOR OSTEOPOROSIS TREATMENT

14,000

WOMEN REMAIN UNTREATED FOR OSTEOPOROSIS

71%

TREATMENT GAP

POLICY FRAMEWORK



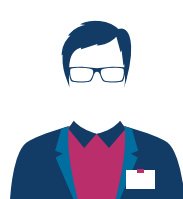
N/A*

ESTABLISHED NATIONAL FRACTURE REGISTRIES



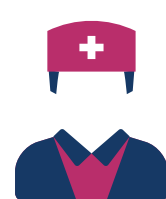
N/A*

OSTEOPOROSIS RECOGNISED AS A SPECIALTY



N/A*

OSTEOPOROSIS PRIMARILY MANAGED IN PRIMARY CARE



OTHER SPECIALTIES INVOLVED IN OSTEOPOROSIS CARE

NO DATA

*NO DATA AVAILABLE

SCORECARD

Policy Framework

Quality of Data	*
National Health Priority	*
Care Pathway	*
Specialist Training	*
Society Support	*

Service Uptake

FRAX® Uptake	
Treatment Gap	
Δ Treatment Gap	
Waiting Time for Hip Fracture Surgery	*

Burden of Disease

Hip Fracture Risk	*
Fracture Risk	
Lifetime Risk	*
FRAX® Risk	
Fracture Projections	

Service Provision

Treatment	*
Availability of DXA	
Access to DXA	*
Risk Models	*
Guideline Quality	*
Liaison Service	*
Quality Indicators	*

*no data available